



School Bulletin Friday 22nd May 2026

Notenn a-dhia Penndhyskader/Note from the Headteacher

What an amazing day we had yesterday when, to celebrate the 100th birthday of Sir David Attenborough, all of our learning was taken outside. The mixed classes really highlighted the care and community of the school pupils and staff. It was heartwarming to see older and younger pupils working together so well regardless of year group. The feedback from children was really positive and has definitely given us something to think about for future learning opportunities.

Have a fantastic half-term break and we look forward to seeing you all again on the 1st June

Mr Cooper - Headteacher

Attendance: 18th May – 22nd May - Whole School 96.8%

For all CELT schools this attendance threshold is set at 96% in line with national attendance data.

Ash	Beech	Sycamore	Oak
96.9%	94.8%	98.8%	96.5%

Thank you for your support in ensuring your children are in school regularly and making the most of their educational opportunities. Congratulations to the winners – **Sycamore class!**

Keslowena/Congratulations to our Celebration Award Winners

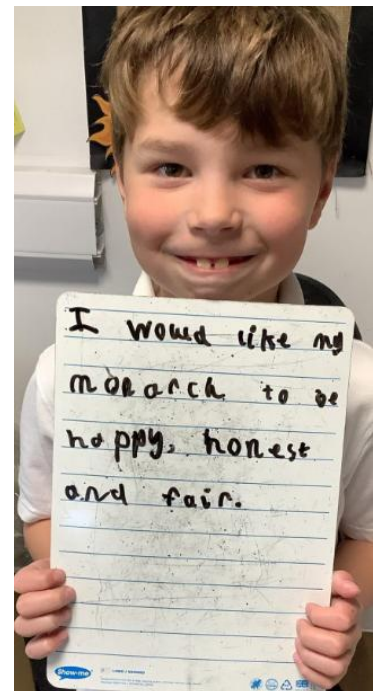
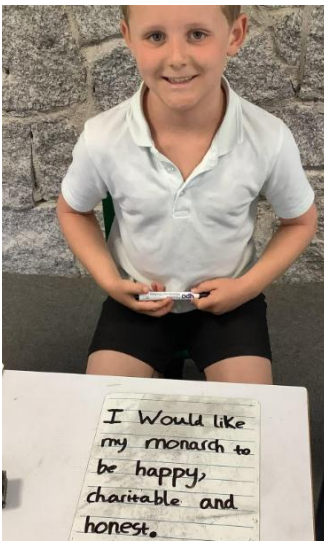
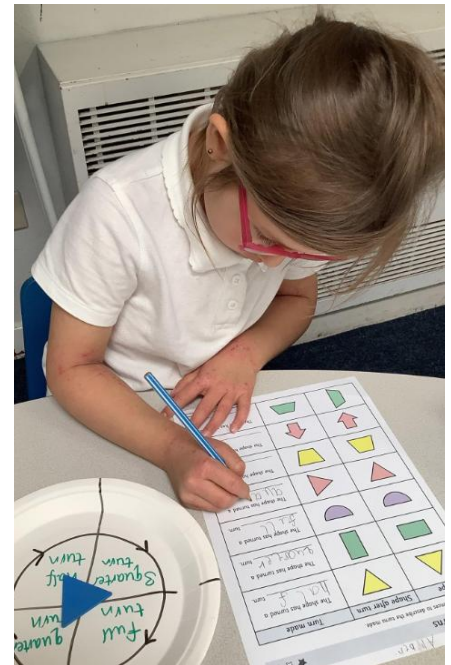
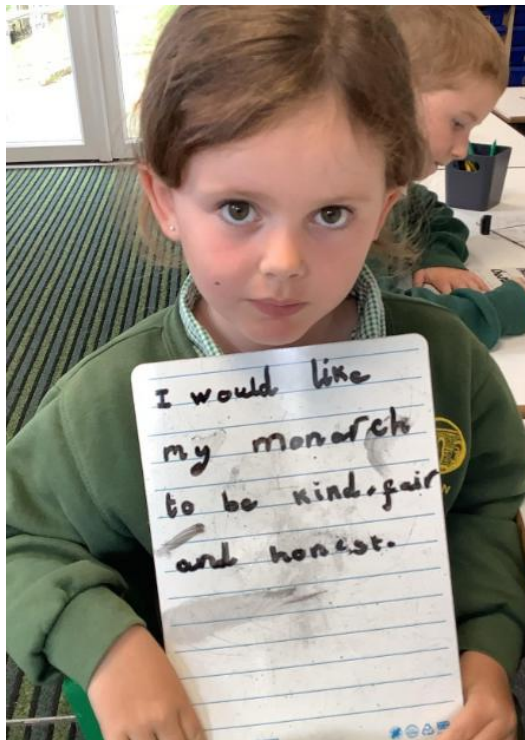
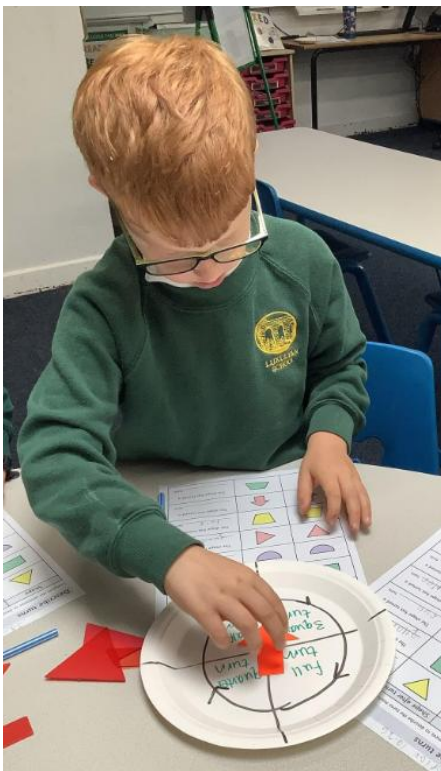
Ash	Star of the Week – Razvan H Superstar Learner – Eliza M
Beech	Star of the Week – Devon K Superstar Learner – Amber-Louise R
Sycamore	Star of the Week – Danny-Paul A Superstar Learner – Tommy P and Isla R
Oak	Star of the Week – Edward D Superstar Learner – Harry C



Luxulyan School

Embracing Community, Shaping Futures

Pandr'a Hwarva?/What's been happening?





Go Cornish

Dydh da/hello



This week our words/phrases are:

Ash and Beech	Oak and Sycamore
Lyver (pronounced liver) Book	ugans (pronounced igans) 20

Cornish Language Survey

Dydh da/ Hello,

We have received an email from the Cornish Language Office regarding the public consultation for the new Cornish Language Strategy 2026–2036.

They are keen to gather feedback from as wide a range of people as possible, including teachers, parents, young people and the wider community. Responses so far have been heavily weighted towards the retired age bracket, so they are particularly hoping to hear more voices from families and schools.

The consultation can be accessed here:
<https://letstalk.cornwall.gov.uk/cornishlanguage>

The deadline for responses is 19th June.

Thank you for your feedback.

Oll an gwella/All the best
Kryw Kernewek

School Closure Reminder

FRIDAY 5TH JUNE - just a reminder that the school is closed for our community cohesion day on 5.6.2026 (the first Friday back after half term).

FRIDAY 3rd JULY - staff INSET day. School closed to pupils for staff training.



Wraparound Clubs

- A reminder to please book wraparound clubs by the **Thursday** for the following week/s.

Treetops - AFTER SCHOOL wraparound care - possible time change

We are currently reviewing the sustainability of our after school wraparound provision due to low uptake in the final hour which is from 4:15-5:15pm.

We need to balance our offer against financial costs of staffing etc. and whilst the breakfast club and first hour of Treetops are popular we are noticing a sustained drop in numbers in the later slot.

Before making any decisions, we would value feedback from families on possible revised finishing times.

Please see below the link to a microsoft form with 3 possible new end time options included:

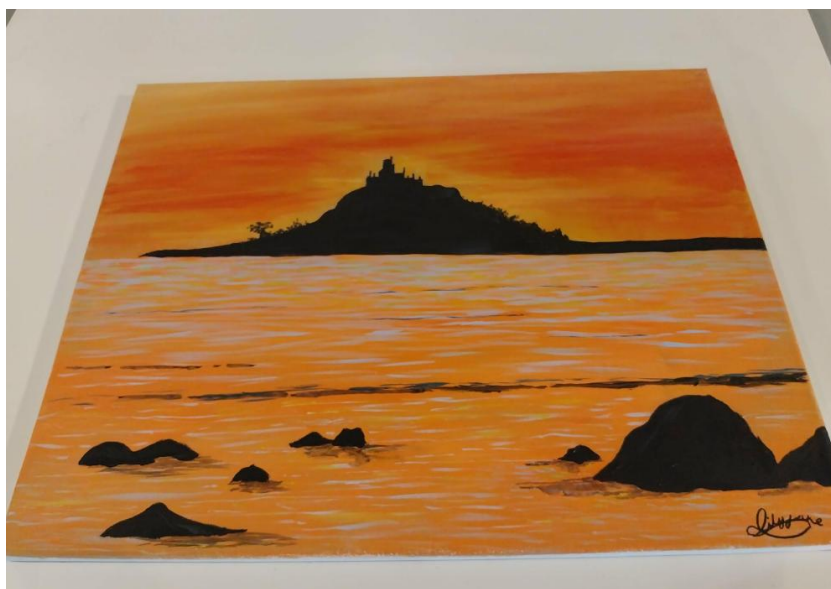
[Treetops Wraparound Care Club - Time Change – Fill out form](#)

We will keep the link open until **Friday 29th May** and would really value your feedback so that we can make an informed choice that serves the needs of our local community.

Best regards...Team Lux

A Showcase of Young Creative Talent!

Some of our students have been working hard to create amazing pieces of art. They are presenting their work at Truro Cathedral from the 19th-29th May, including this fantastic picture by Lily-Jane in Year 6. Well done Lily-Jane!





Attendance Update – Notice to Improve letter

We know that we have a very supportive school community who generally understand the value and importance of regular attendance in school.

As part of the national focus upon improving attendance we are expected to work alongside families who have children with low attendance (below 95%).

One part of that process is to notify you by letter of your child's attendance levels and offer support. We also include their record of registration for this year. We often find that families are unaware of their current attendance levels so this information has been identified as being very helpful.

We are placed under some pressure as a school to fine families where 5 consecutive days of absence are asked for. This also extends to combinations of days over a term that equate to 5 days.

I am very keen to avoid fines but recognise that there may be occasions where we unfortunately do have to take this approach.

If you receive a letter from us, which is starting the journey towards fines, please know that we would always rather work with you to avoid this route and ask you to consider very carefully any requests for holidays during term times.

A Home for Alan book

We have had an exciting delivery today... a very special new book for the library!

"A home for Alan" is written and illustrated by our very talented PALS treasurer, Laura Knight. It is inspired by a real life toad that Laura first met on Christmas day when she had to inadvertently rescue him from taking up residence in Chris' old shoe!

Come and read it in the library, or you can order a copy from these websites:

www.waterstones.com

www.amazon.co.uk

<http://troubador.co.uk>

www.lovereadings4kids.co.uk

<http://coles-books.co.uk>

www.theportobellobookshop.com

www.bookdelivery.com





Luxulyan School

Embracing Community, Shaping Futures

Outdoor Learning Day!





Dedhyow rag'as Dydhlyver / Dates for your Diary 2025-2026

22 nd April	Beech Class - Cornish Pirates session begin on Tuesday's (1st half of Summer term)
23 rd April	Music Lessons begin after Easter holidays on Thursday's
27 th April	All after school clubs begin
1 st May	Baby calves visit to Ash Class
4 th May	May Bank Holiday - School closed
5 th May	No Wraparound Club and Musical Theatre club available
6 th May	Parent/Carer Forum - after school
11 th - 14 th May	Year 6 - SATS Week
15 th May	Poltair Year 6 Transition Visit - Luxulyan School
21 st May	Outdoor Classroom day
25 th - 29 th May	May Half Term - School closed
5 th June	Community Cohesion Day - School closed
9 th June	Penrice Year 6 Transition Visit - Luxulyan School
22 nd June	New EYFS children 2026/27 - Parents/Carers Information Meeting 5pm
30 th June	New EYFS children 2026/27 - Stay and Play session with a parent/carer 2.15pm - 3pm
3 rd July	INSET day - School closed
7 th July	New EYFS children 2026/27 - Stay and Play session with a parent/carer 2.15pm - 3pm
7 th - 9 th July	Oak Class - London Residential Trip <ul style="list-style-type: none"> • 1st payment instalment: 31st December • 2nd payment instalment: 31st January • 3rd payment instalment: 28th February • 4th payment instalment: 30th April • 5th payment instalment: 31st May Year 6 - Transition Day - Poltair School
15 th - 17 th July	Sycamore Class - Porthpean Residential Trip <ul style="list-style-type: none"> • 1st payment instalment: 31st December • 2nd payment instalment: 28th February • 3rd payment instalment: 30th April • 4th payment instalment: 30th June
16 th July	New EYFS children 2026/27 - Transition Morning: 10.30am - 11.30am
23 rd July	New EYFS children 2026/27 - Transition Afternoon: 1.30pm - 3pm



Luxulyan School

Embracing Community, Shaping Futures

20 th - 24 th July	Whole School Activity Week <ul style="list-style-type: none"> • 21st July: Sports Day • 23rd July: Year 6 trip to Adrenalin Quarry
27 th July - 3 rd September	Summer Holidays - School closed
1 st - 2 nd September	INSET Days - School closed
3 rd September	Start of 1 st Half of Autumn Term 2026 - School open New EYFS children 2026/27 - Parent and child 'All About Me' Meetings
4 th September	New EYFS children 2026/27 - Parent and child 'All About Me' Meetings
7 th September	New EYFS children 2026/27 - All children in for morning session
8 th September	New EYFS children 2026/27 - All children in for morning plus lunch session
9 th September	New EYFS children 2026/27 - All children in full time

Parent Café

Monday 22nd June, 2:30pm - 4:30pm

Parent café for parents of students with ASC / ASD / ADHD

This event is an informal opportunity for you as parents/carers to visit the school, meet the team and view our setting. You will get the chance to discuss any concerns that you may have ahead of your child starting in September.

The event will be supported by Katy Frampton from the County Autism Team as well as Sue Wakeling (Operational SENDCo at Penrice). We look forward to answering any questions you may have about provision and support.

For more information or to express your interest, please contact Mrs Wakeling, Operational SENDCo swakeling@penrice.celtrust.org.

We look forward to seeing you there!





Luxulyan School

Embracing Community, Shaping Futures

Support Organisations



**In an emergency,
call 999**



Worried about a child?

Multi-agency Referral Unit (MARU)

0300 123 1116

Out-of-hours number 01208 251300

multiagencyreferralunit@cornwall.gov.uk



Support for children and young people is available from

Cornwall's Early Help Hub

(01872) 322 277

earlyhelpclub@cornwall.gov.uk

NSPCC

0808 800 5000

citizens
advice

Cornwall

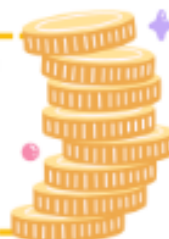


Citizens Advice Cornwall who will be able to issue you with a **food bank voucher** - call 0800 144 8848

Financial support or advice on care and support services for families

0808 208 2138

www.supportincornwall.org.uk



YOUNGMINDS

Support young people with the tools to look after their mental health

Parents helpline -

0808 802 5544

Young person -

Text SHOUT to 85258



free, safe & anonymous advice at kooth.com

shout
85258

"It's alright to ask for help"

SAMARITANS

116 123



0800 58 58 58
Helpline for men
www.thecalmzone.net

HOPELINE247

0800 068 4141

TEXT: 07860 039 967



SAFER

FUTURES

Ending Abuse in
Cornwall &
Isles of Scilly

0300 777 4777
Mon-Fri 9am-9pm
Sat- 9am-5pm



Support for young people
aged 11 to 25

youngpeoplecornwall.org



LEARNING TOGETHER
CORNWALL EDUCATION LEARNING TRUST



Image: Carl Nicholls

Clay Walk Festival

Discover walks around the Clay villages.
Get out and about and connect with
nature for better health and well-being.
edenproject.com/clay-walk



Nature Discovery Day

Tuesday 26 May, Drop-in 10am-3pm
ClayTAWC, Fore Street, St Dennis.
PL26 8AF

Dubbers Trail Butterfly Walk

Tuesday 26 May, 11am
2 miles. Search for the Dingy Skipper.
What3words ///heap.dozens.inserting

Tregoss Moor

Wednesday 27 May, Drop-in 10am-3pm
1.5 miles, self-guided and family-friendly.
Tregoss Car Park, PL26 8NJ

Two Treverbyn Trails

Thursday 28 May, 10am
A mile-long family-friendly route which
can be extended with an additional and
more challenging 2-mile hike across
Caerloggas Downs.
Treverbyn Hall, PL26 8TL

West Carclaze to Eden Project

Friday 29 May, 10am
3.6 miles one-way. Booking essential via:
natureconnections@edenproject.com

Helman Tor to Eden Project

Saturday 30 May, 9.30am
8.5 miles one-way. Booking essential, visit
eventbrite.co.uk and search 'Helman Tor'.

Wheal Martyn to Carlyon Farm China Clay Dry

Saturday 30 May, 10am
3 miles, there and back.
Wheal Marytn Museum, PL26 8XG

St. Dennis to Goss Moor

Wednesday 3 June, 10am
2 miles, there and back, with a
steep climb to St Denys Church.
ClayTAWC, Fore Street, St. Dennis. PL26 8AF



Healthy
Cornwall

